

STRUCTURAL ENGINEERS ASSOCIATION OF ARIZONA

2022

19th Annual

EXCELLENCE IN STRUCTURAL ENGINEERING AWARDS



**STRUCTURAL ENGINEERS ASSOCIATION OF ARIZONA
EXCELLENCE IN STRUCTURAL ENGINEERING**

STRUCTURAL ENGINEERS ASSOCIATION OF ARIZONA

Brent Woods (Judge 2007 thru 2022):

“I am always proud of our profession when I see the excellent work that we all do.”



**STRUCTURAL ENGINEERS ASSOCIATION OF ARIZONA
EXCELLENCE IN STRUCTURAL ENGINEERING**

STRUCTURAL ENGINEERS ASSOCIATION OF ARIZONA

Awards History (2004 thru 2022)

- ✦ **Years = 19**
- ✦ **Entries = 124**
- ✦ **Awards = 98**
 - ★ **Structural Excellence = 37**
 - ★ **Merit Awards = 61**

*All AWARD WINNERS (2022 thru 2004)
are listed at the end of this presentation.*



**STRUCTURAL ENGINEERS ASSOCIATION OF ARIZONA
EXCELLENCE IN STRUCTURAL ENGINEERING**

2022 Structural Excellence Award Competition Entries

Project Name	Location	Category	FIRM
Student Athlete High Performance Center-NAU	Flagstaff, AZ	New Buildings, Over \$10M	DLR Group
Pima County Historic Courthouse Renovations	Tucson, AZ	Forensic/Renovation/Retrofit/Rehabilitation	Martin, White, & Griffis, Structural Engineers
University of Arizona Student Success District	Tucson, AZ	Forensic/Renovation/Retrofit/Rehabilitation	Martin, White, & Griffis, Structural Engineers
Adeline	Phoenix, AZ	New Buildings, Over \$10M	PK Associates, LLC
Helios Education Foundation and Vince Roig Convening Center	Phoenix, AZ	New Buildings, Over \$10M	PK Associates, LLC
Hyatt Centric Congress Avenue Austin	Austin, TX	New Buildings, Over \$10M	PK Associates, LLC
Mayo Clinic Phoenix Campus West Expansion	Phoenix, AZ	New Buildings, Over \$10M	PK Associates, LLC
JBE041 AWACS Alert Hangar Project*	JBER, Anchorage AK	Forensic/Renovation/Retrofit/Rehabilitation*	Schneider Structural Engrs.
Mesa Gateway Control Tower ATC Steel Erection	Mesa, AZ	Other	Schneider Structural Engrs.



**STRUCTURAL ENGINEERS ASSOCIATION OF ARIZONA
EXCELLENCE IN STRUCTURAL ENGINEERING**

STRUCTURAL ENGINEERS ASSOCIATION OF ARIZONA

2022 *EXCELLENCE IN STRUCTURAL ENGINEERING AWARDS*



STRUCTURAL ENGINEERS ASSOCIATION OF ARIZONA
EXCELLENCE IN STRUCTURAL ENGINEERING

**E
X
C
E
L
L
E
N
C
E**

2022



STRUCTURAL ENGINEERS ASSOCIATION OF ARIZONA

2022

Excellence in Structural Engineering Award

Forensic/Renovation/Retrofit/Rehabilitation

**University of Arizona Student Success District
Tucson, AZ**

presented to

Martin, White & Griffis Structural Engineers, Inc.



**STRUCTURAL ENGINEERS ASSOCIATION OF ARIZONA
EXCELLENCE IN STRUCTURAL ENGINEERING**

**E
X
C
E
L
L
E
N
C
E**

2022



Constructed ~1926

**STRUCTURAL ENGINEERS ASSOCIATION OF ARIZONA
EXCELLENCE IN STRUCTURAL ENGINEERING**



**E
X
C
E
L
L
E
N
C
E**

Project Summary

One of the most iconic buildings on the University of Arizona Campus is Bear Down Gymnasium. When flying into or out of Tucson, the plane passengers see the rallying cry “Bear Down” emblazed in blue letters across its barrel roof. When discussions began around creating a student district at the heart of the University of Arizona campus, campus leaders knew Bear Down needed to be part of it. Renovations throughout the 60,000-square foot building created a wide range of office programs student recreation facilities. The building was listed on the National Register of Historic Places in 1990.

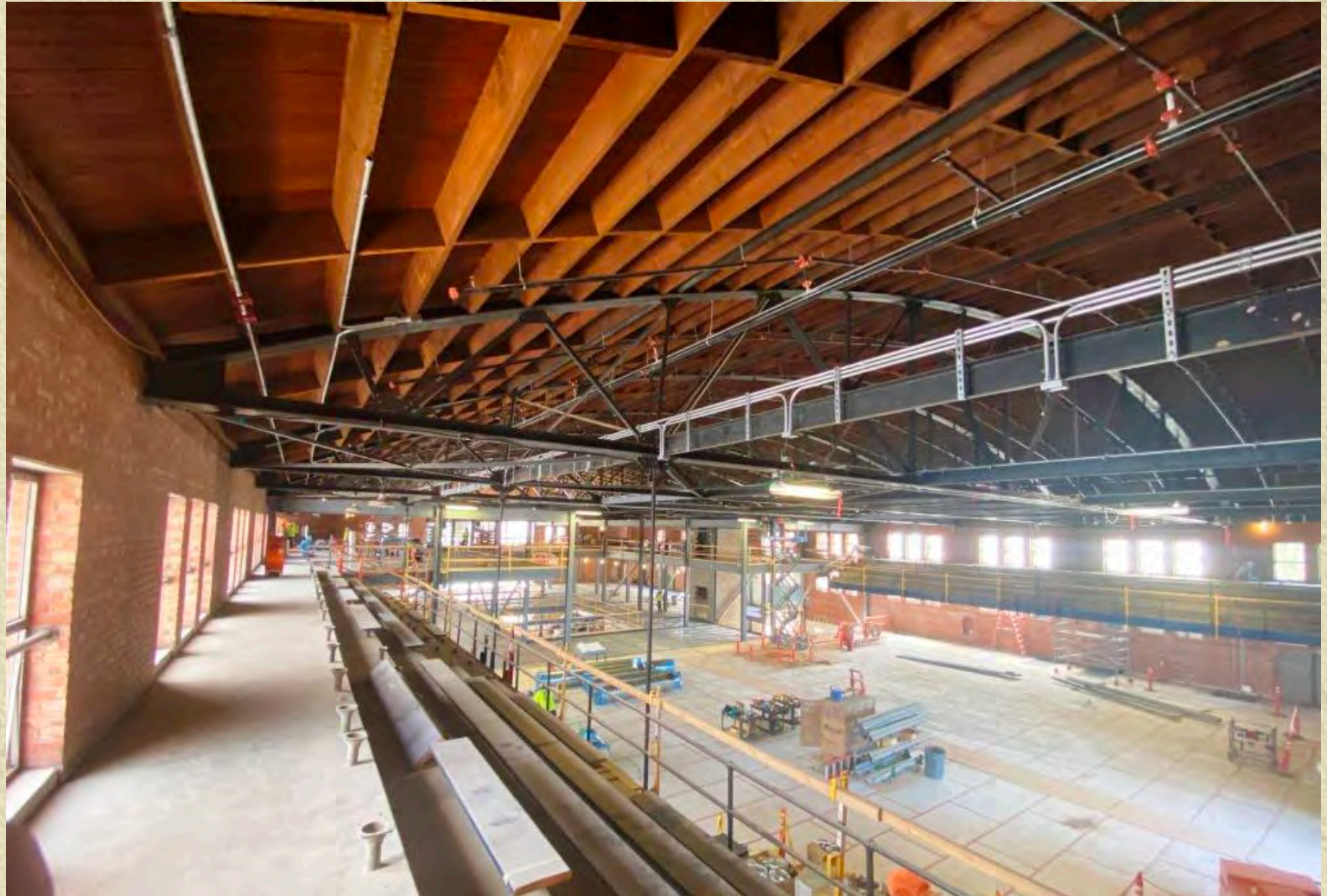
2022



**STRUCTURAL ENGINEERS ASSOCIATION OF ARIZONA
EXCELLENCE IN STRUCTURAL ENGINEERING**

**E
X
C
E
L
L
E
N
C
E**

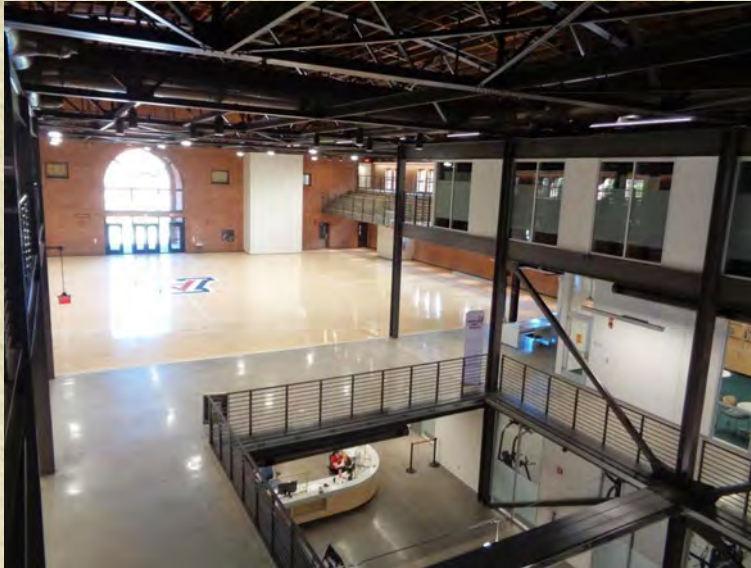
2022



**STRUCTURAL ENGINEERS ASSOCIATION OF ARIZONA
EXCELLENCE IN STRUCTURAL ENGINEERING**

**E
X
C
E
L
L
E
N
C
E**

2022



**STRUCTURAL ENGINEERS ASSOCIATION OF ARIZONA
EXCELLENCE IN STRUCTURAL ENGINEERING**



**E
X
C
E
L
L
E
N
C
E**

2022



STRUCTURAL ENGINEERS ASSOCIATION OF ARIZONA

2022

Excellence in Structural Engineering Award

New Buildings, Over \$10 Million Dollars

**Helios Education Foundation and
Vince Roig Convening Center
Phoenix, AZ**

presented to

PK Associates, LLC



**STRUCTURAL ENGINEERS ASSOCIATION OF ARIZONA
EXCELLENCE IN STRUCTURAL ENGINEERING**

**E
X
C
E
L
L
E
N
C
E**

2022



**STRUCTURAL ENGINEERS ASSOCIATION OF ARIZONA
EXCELLENCE IN STRUCTURAL ENGINEERING**



**E
X
C
E
L
L
E
N
C
E**

2022

Project Summary

The 70,000 SF Helios Education Foundation and Vince Roig Convening Center is designed with resiliency and sustainability in mind with a 100-year service life. The campus features offices and meeting spaces focused on post-secondary education advancement for the community. Utilizing the natural geology and biophilic elements to create an indoor-outdoor open space environment, the design and operations include energy and water-conscious aspects for staying as close to net-zero as possible. The 200-space basement-level parking garage is designed to convert into offices in the future. The construction type is steel frame on a cast-in-place concrete.



**STRUCTURAL ENGINEERS ASSOCIATION OF ARIZONA
EXCELLENCE IN STRUCTURAL ENGINEERING**

**E
X
C
E
L
L
E
N
C
E**

2022

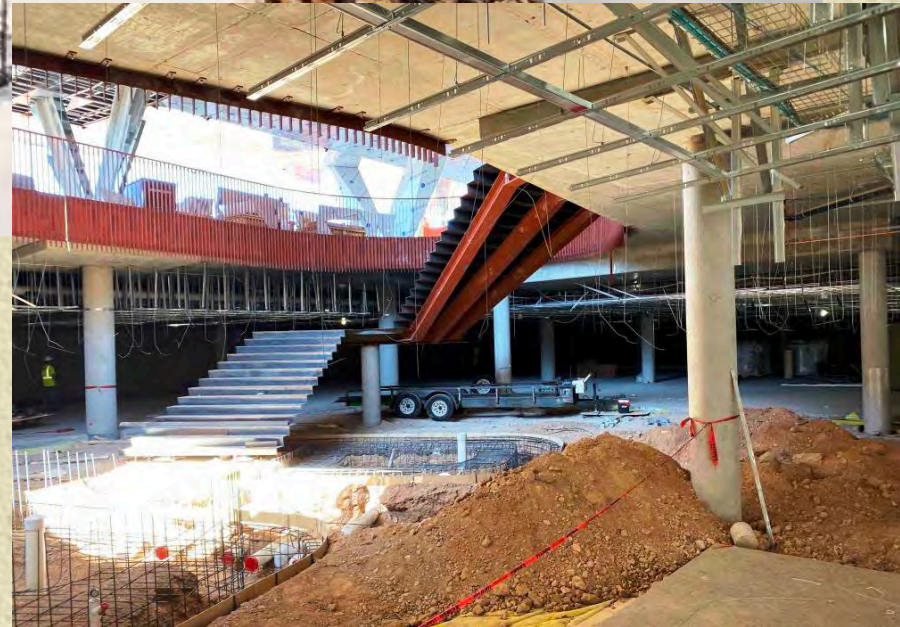


**STRUCTURAL ENGINEERS ASSOCIATION OF ARIZONA
EXCELLENCE IN STRUCTURAL ENGINEERING**



**E
X
C
E
L
L
E
N
C
E**

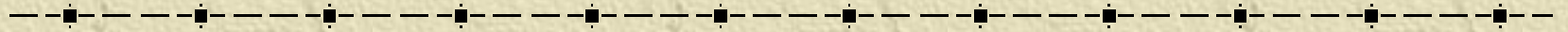
2022



**STRUCTURAL ENGINEERS ASSOCIATION OF ARIZONA
EXCELLENCE IN STRUCTURAL ENGINEERING**



2022 Excellence in Structural Engineering Award Winners



PROJECT	FIRM	CATEGORY
University of Arizona Student Success District	Martin, White & Griffis, Inc	Forensic/Renovation/ Retrofit/Rehabilitation
Helios Education Foundation & Vince Roig Convening Center	PK Associates, LLC	New Buildings, Over \$10M



**STRUCTURAL ENGINEERS ASSOCIATION OF ARIZONA
EXCELLENCE IN STRUCTURAL ENGINEERING**

STRUCTURAL ENGINEERS ASSOCIATION OF ARIZONA

2022 **MERIT AWARDS** **IN STRUCTURAL** **ENGINEERING**



STRUCTURAL ENGINEERS ASSOCIATION OF ARIZONA
EXCELLENCE IN STRUCTURAL ENGINEERING

**M
E
R
I
T**

2022



STRUCTURAL ENGINEERS ASSOCIATION OF ARIZONA

2022

Merit Award in Structural Engineering

New Buildings, Over \$10 Million Dollars

**Student Athlete High Performance Center
Northern Arizona University
Flagstaff, AZ**

presented to

DLR Group



**STRUCTURAL ENGINEERS ASSOCIATION OF ARIZONA
EXCELLENCE IN STRUCTURAL ENGINEERING**

**M
E
R
I
T**

2022



**STRUCTURAL ENGINEERS ASSOCIATION OF ARIZONA
EXCELLENCE IN STRUCTURAL ENGINEERING**

M
E
R
I
T

2022

Project Summary

Nestled into a hillside of Ponderosa Pines and with views of Humphrey's Peak, the High-Performance training facility attracts top student-athletes to Northern Arizona University. DLR Group delivered a 65,000 SF, three-story, state-of-the-art High-Performance Center with a 10,000 square-foot weight room, sports medicine spaces, academic center, practice basketball courts, team meeting rooms, locker rooms, and a hall of fame. The facility also has an iconic team auditorium located on the third level, with unobstructed views of the 12,600-foot Humphrey's Peak and the San Francisco Range. The unique spaces and environment provided for structural challenges and opportunities for creative design.



**STRUCTURAL ENGINEERS ASSOCIATION OF ARIZONA
EXCELLENCE IN STRUCTURAL ENGINEERING**

M
E
R
I
T

2022



**STRUCTURAL ENGINEERS ASSOCIATION OF ARIZONA
EXCELLENCE IN STRUCTURAL ENGINEERING**



**M
E
R
I
T**

2022



STRUCTURAL ENGINEERS ASSOCIATION OF ARIZONA

2022

Merit Award in Structural Engineering

Forensic/Renovation/Retrofit/Rehabilitation

**Pima County Historic Courthouse Renovations
Tucson, AZ**

presented to

Martin, White & Griffis Structural Engineers, Inc.



**STRUCTURAL ENGINEERS ASSOCIATION OF ARIZONA
EXCELLENCE IN STRUCTURAL ENGINEERING**

**M
E
R
I
T**

2022



**STRUCTURAL ENGINEERS ASSOCIATION OF ARIZONA
EXCELLENCE IN STRUCTURAL ENGINEERING**



**M
E
R
I
T**

2022

Project Summary

The Pima County Historic Courthouse has been a landmark for 93 years. The Courthouse, designed by renowned architect Roy Place, was built in 1929, and has been a landmark in the hearts and minds of Southern Arizonan's ever since. Pima County managed the \$35 million restoration using delivery methods that maintained the budget while expediting construction during the global pandemic. Renovation of the building started in 2017 and involved multiple phases from a building assessment to an exterior and infrastructure renovation, to an interior renovation for tenant improvements.



**STRUCTURAL ENGINEERS ASSOCIATION OF ARIZONA
EXCELLENCE IN STRUCTURAL ENGINEERING**

M
E
R
I
T

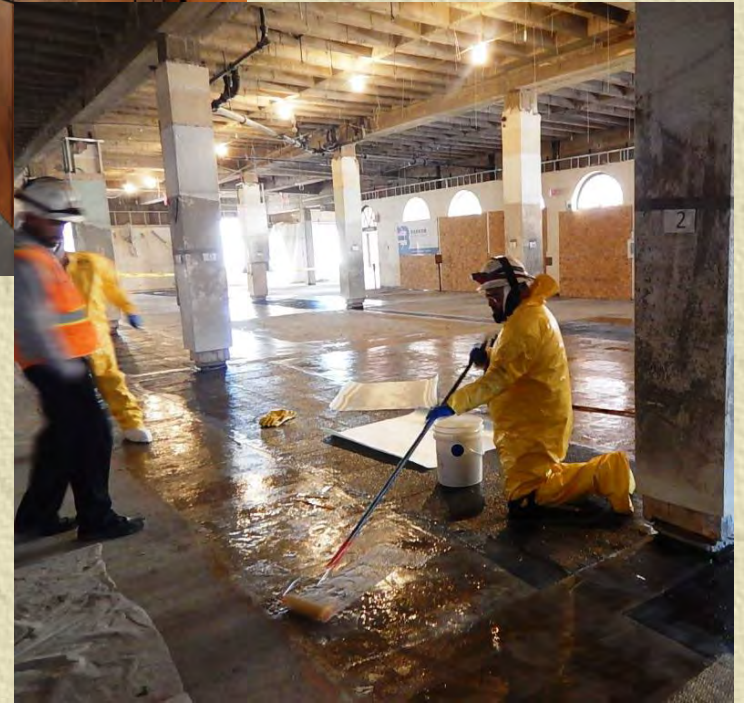
2022



**STRUCTURAL ENGINEERS ASSOCIATION OF ARIZONA
EXCELLENCE IN STRUCTURAL ENGINEERING**

M
E
R
I
T

2022



**STRUCTURAL ENGINEERS ASSOCIATION OF ARIZONA
EXCELLENCE IN STRUCTURAL ENGINEERING**



**M
E
R
I
T**

2022



STRUCTURAL ENGINEERS ASSOCIATION OF ARIZONA

2022

Merit Award in Structural Engineering

New Buildings, Over \$10 Million Dollars

**Adeline
Phoenix, AZ**

presented to

PK Associates, LLC



**STRUCTURAL ENGINEERS ASSOCIATION OF ARIZONA
EXCELLENCE IN STRUCTURAL ENGINEERING**

M
E
R
I
T

2022



**STRUCTURAL ENGINEERS ASSOCIATION OF ARIZONA
EXCELLENCE IN STRUCTURAL ENGINEERING**



**M
E
R
I
T****2022***Project Summary*

The Adeline luxury apartment development is located at the southernmost end of the Collier Center in downtown Phoenix. The 355,364 SF, 25-story apartment building consists of 379 residential units, a rooftop oversized pool, an elevated urban park, and a rooftop dog park. Additionally, 4,623 SF of new retail space was added to 12,578 SF of existing retail.

Designed atop an existing 3-story, below-grade parking garage originally intended for a 20-story, smaller footprint building, the underground parking was reused as the new structure increased five stories vertically and the square footage increased with an eleven-story north wing.



**STRUCTURAL ENGINEERS ASSOCIATION OF ARIZONA
EXCELLENCE IN STRUCTURAL ENGINEERING**

M
E
R
I
T

2022



**STRUCTURAL ENGINEERS
EXCELLENCE IN STRU**

M
E
R
I
T

2022



**STRUCTURAL ENGINEERS ASSOCIATION OF ARIZONA
EXCELLENCE IN STRUCTURAL ENGINEERING**



M
E
R
I
T

2022



STRUCTURAL ENGINEERS ASSOCIATION OF ARIZONA

2022

Merit Award in Structural Engineering

New Buildings, Over \$10 Million Dollars

**Hyatt Centric Congress Avenue Austin
Austin, TX**

presented to

PK Associates, LLC



**STRUCTURAL ENGINEERS ASSOCIATION OF ARIZONA
EXCELLENCE IN STRUCTURAL ENGINEERING**

M
E
R
I
T

2022



STRUCTURAL ENGINEERS /
EXCELLENCE IN STRUC



M
E
R
I
T

2022

Project Summary

This 31-story boutique hotel with one basement level provides 246 guest rooms, along with meeting and event space. Special structural considerations were required to locate this building on a site with an existing structure and adjacent to Austin's historic Paramount Theatre. Originally designed as a micro-unit residential tower, this building was converted to a hotel when development changed hands. The construction type is post-tensioned flat-plate concrete slabs and concrete shear walls supported on a mat foundation.



**STRUCTURAL ENGINEERS ASSOCIATION OF ARIZONA
EXCELLENCE IN STRUCTURAL ENGINEERING**

M
E
R
I
T

2022



**STRUCTURAL ENGINEERS ASSOCIATION OF ARIZONA
EXCELLENCE IN STRUCTURAL ENGINEERING**



M
E
R
I
T

2022



**STRUCTURAL ENGINEERS ASSOCIATION OF ARIZONA
EXCELLENCE IN STRUCTURAL ENGINEERING**



M
E
R
I
T

2022



STRUCTURAL ENGINEERS ASSOCIATION OF ARIZONA

2022

Merit Award in Structural Engineering

New Buildings, Over \$10 Million Dollars

**Mayo Clinic
Phoenix Campus West Expansion
Phoenix, AZ**

presented to

PK Associates, LLC



**STRUCTURAL ENGINEERS ASSOCIATION OF ARIZONA
EXCELLENCE IN STRUCTURAL ENGINEERING**

M
E
R
I
T

2022



**STRUCTURAL ENGINEERS ASSOCIATION OF ARIZONA
EXCELLENCE IN STRUCTURAL ENGINEERING**



M
E
R
I
T

2022

Project Summary

Mayo Clinic is doubling the size of its Phoenix campus. The 583,800 SF West Expansion includes a six-story patient tower (concourse plus six floors above grade) designed to expand to nine stories; a three-story building housing an expanded Emergency Department, Laboratory Medicine, Radiology, Pharmacy, Clinical and Outpatient services; plus 20,000 SF of tenant improvements.

Each level of the new tower connects to the directly adjacent existing hospital, including elevated connecting corridors and a tunnel constructed under the functioning hospital. The thoughtful structural design ensured day-to-day operations were uninterrupted during construction, maintaining the exceptional patient experience Mayo Clinic is known for.



**STRUCTURAL ENGINEERS ASSOCIATION OF ARIZONA
EXCELLENCE IN STRUCTURAL ENGINEERING**

M
E
R
I
T

2022



**STRUCTURAL ENGINEERS ASSOCIATION OF ARIZONA
EXCELLENCE IN STRUCTURAL ENGINEERING**



M
E
R
I
T

2022



**STRUCTURAL ENGINEERS ASSOCIATION OF ARIZONA
EXCELLENCE IN STRUCTURAL ENGINEERING**

**M
E
R
I
T**

2022



STRUCTURAL ENGINEERS ASSOCIATION OF ARIZONA

2022

Merit Award in Structural Engineering

Forensic/Renovation/Retrofit/Rehabilitation

**JBE041 AWACS Alert Hangar Project
JBER, Anchorage AK**

presented to

Schneider Structural Engineers



**STRUCTURAL ENGINEERS ASSOCIATION OF ARIZONA
EXCELLENCE IN STRUCTURAL ENGINEERING**

M
E
R
I
T

2022



**STRUCTURAL ENGINEERS ASSOCIATION OF ARIZONA
EXCELLENCE IN STRUCTURAL ENGINEERING**

M
E
R
I
T

2022

Project Summary

About eight years ago, the Air Force determined the need to repurpose an old hangar comprised of an older portion originally designed in the late 1950's and a major addition portion designed in the early 1980's, with other smaller additions built throughout the life of the structure. This hangar at Joint Base Elmendorf-Richardson (JBER) in Anchorage, Alaska, was released as a Design/Build project to house a high-tech AWAC's (Airborne Warning And Control System) aircraft, along with a new Alert Facility for the crew to live in, so the aircraft can deploy on a moment's notice.



**STRUCTURAL ENGINEERS ASSOCIATION OF ARIZONA
EXCELLENCE IN STRUCTURAL ENGINEERING**

M
E
R
I
T

2022



**STRUCTURAL ENGINEERS ASSOCIATION OF ARIZONA
EXCELLENCE IN STRUCTURAL ENGINEERING**



M
E
R
I
T

2022



**STRUCTURAL ENGINEERS ASSOCIATION OF ARIZONA
EXCELLENCE IN STRUCTURAL ENGINEERING**

**M
E
R
I
T**

2022



STRUCTURAL ENGINEERS ASSOCIATION OF ARIZONA

2022

Merit Award in Structural Engineering

Other Structures

Mesa Gateway

Control Tower ATC Steel Erection

Mesa, AZ

presented to

Schneider Structural Engineers



**STRUCTURAL ENGINEERS ASSOCIATION OF ARIZONA
EXCELLENCE IN STRUCTURAL ENGINEERING**

M
E
R
I
T

2022



**STRUCTURAL ENGINEERS ASSOCIATION OF ARIZONA
EXCELLENCE IN STRUCTURAL ENGINEERING**



M
E
R
I
T

2022

Project Summary

Phoenix-Mesa Gateway Airport currently supports five (5) commercial airlines, has three (3) runways and contributes approximately \$1.8 billion annually to the Arizona economy.

JB Steel, the steel fabricator on this project, originally contracted Schneider Structural Engineers (SSE) as their rigging/erection engineer. SSE assisted with the steel structure to ensure that it could be lifted in two (2) complete assemblies, instead of being built piece by piece on top of the precast structure, standing 122 feet tall.

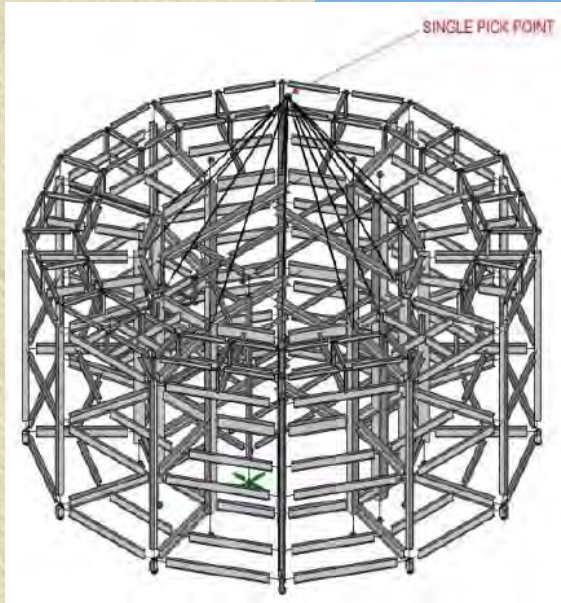


**STRUCTURAL ENGINEERS ASSOCIATION OF ARIZONA
EXCELLENCE IN STRUCTURAL ENGINEERING**

Mesa Gateway Control Tower ATC Steel Erection Schneider Structural

M
E
R
I
T

2022



**STRUCTURAL ENGINEERS ASSOCIATION OF ARIZONA
EXCELLENCE IN STRUCTURAL ENGINEERING**



Mesa Gateway Control Tower ATC Steel Erection Schneider Structural

M
E
R
I
T

2022



**STRUCTURAL ENGINEERS ASSOCIATION OF ARIZONA
EXCELLENCE IN STRUCTURAL ENGINEERING**

**M
E
R
I
T**

2022



**STRUCTURAL ENGINEERS ASSOCIATION OF ARIZONA
EXCELLENCE IN STRUCTURAL ENGINEERING**



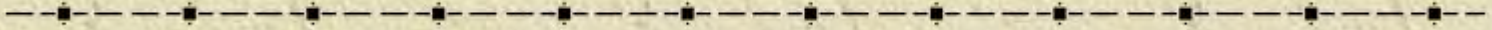
2022 Merit Awards in Structural Engineering

PROJECT	FIRM	CATEGORY
Student Athlete High Performance Center-NAU	DLR Group	New Buildings, Over \$10M
Pima County Historic Courthouse Renovations	Martin, White & Griffis Structural Engineers, Inc.	Forensic/Renovation/Retrofit/Rehabilitation
Adeline	PK Associates, LLC	New Buildings, Over \$10M
Hyatt Centric Congress Avenue Austin	PK Associates, LLC	New Buildings, Over \$10M
Mayo Clinic Phoenix Campus West Expansion	PK Associates, LLC	New Buildings, Over \$10M
JBE041 AWACS Alert Hangar Project*	Schneider Structural Engineers	Forensic/Renovation/Retrofit/Rehabilitation
Mesa Gateway Control Tower ATC Steel Erection	Schneider Structural Engineers	Other Structures



**STRUCTURAL ENGINEERS ASSOCIATION OF ARIZONA
EXCELLENCE IN STRUCTURAL ENGINEERING**

2022 Award Winners



- ✦ Excellence in Structural Engineering
 - ✦ Univ. Arizona Student Success District
Martin, White & Griffis
 - ✦ Helios Education Foundation & Vince Roig Convening Ctr.
PK Associates, LLC
- ✦ Merit Award in Structural Engineering
 - ✦ Student Athlete Performance Ctr-NAU
DLR Group
 - ✦ Pima Co. Historic Courthouse Renovations
Martin, White & Griffis
 - ✦ Adeline
PK Associates, LLC
 - ✦ Hyatt Centric Congress Avenue Austin
PK Associates, LLC
 - ✦ Mayo Clinic Phx Campus Expansion
PK Associates, LLC
 - ✦ JBE041 AWACS Alert Hangar Project
Schneider Structural Engineers
 - ✦ Mesa Gateway Control Tower Erection
Schneider Structural Engineers



**STRUCTURAL ENGINEERS ASSOCIATION OF ARIZONA
EXCELLENCE IN STRUCTURAL ENGINEERING**

Judges, 2022

2004 thru 2022 (19 years)

✦ Sal Caccavale, Retired/ Committee Chair (Tucson)

2007 thru 2022 (16 years)

✦ Brent Woods, Woods Structural (Tucson)

2009 thru 2016, 2018 thru 2022 (13 years)

✦ Paul Scott, Caruso Turley Scott, Inc. (Central)

2015 thru 2022 (8 years)

✦ Janelle Perry, JP Structural (Tucson)

2017 thru 2022 (6 years)

✦ Greg Bakkum, Bakkum Noelke (Central)

2021 & 2022 (2 years)

✦ Andrew Netupsky, Structural Engineers Co. (Central)

✦ Allan Ortega, M3 Engineering (Tucson)



STRUCTURAL ENGINEERS ASSOCIATION OF ARIZONA
EXCELLENCE IN STRUCTURAL ENGINEERING

Previous Judges

- ✦ Mo Glancy, Retired - City of Phoenix (Central)
2004 thru 2020 (17 years)
- ✦ Bruce Barrera, Retired - CBH Consulting Engrs (Central)
2004 thru 2018 (15 years)
- ✦ George Stevenson, Structural Concepts (Tucson)
2009 thru 2014, 2019 (7 years)
- ✦ Dan Lundwall, Retired - Structural Concepts (Tucson)
2006, 2008 (2 years)
- ✦ Steven Hess, Hess Structural Engineering (Tucson)
2006 (1 year)
- ✦ Bill Sheely, OWP (Architect, Phoenix)
2004, 2005, 2006 (3 years)
- ✦ Mo Modi, Modi & Company (Tucson)
2004, 2005 (2 years)
- ✦ Henry Tom, Line & Space (Architect, Tucson)
2004, 2005 (2 years)



STRUCTURAL ENGINEERS ASSOCIATION OF ARIZONA
EXCELLENCE IN STRUCTURAL ENGINEERING

SEAOA Awards Committee

WILL YOU HELP?

- ◆ In need of a Co-Chair (Full Member)
- ◆ Future Judges (Full Members)
- ◆ Contact Sal Caccavale: seccbc@cox.net



**STRUCTURAL ENGINEERS ASSOCIATION OF ARIZONA
EXCELLENCE IN STRUCTURAL ENGINEERING**

Closing Notes

- ◆ **This presentation will be available for viewing on the SEAoA website.**
- ◆ **Award winning projects will be featured in the upcoming 2022-2023 SEAoA quarterly newsletters.**



**STRUCTURAL ENGINEERS ASSOCIATION OF ARIZONA
EXCELLENCE IN STRUCTURAL ENGINEERING**

2023 Award Winners

Excellence in Structural Engineering Award

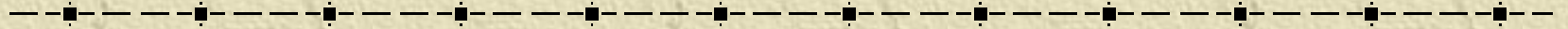
◆ **WILL THIS BE YOU?**

**Mark Your Calendars for
March 2023 Announcement !**



**STRUCTURAL ENGINEERS ASSOCIATION OF ARIZONA
EXCELLENCE IN STRUCTURAL ENGINEERING**

STRUCTURAL ENGINEERS ASSOCIATION OF ARIZONA



EXCELLENCE IN STRUCTURAL ENGINEERING

AWARD WINNERS 2021 thru 2004



**STRUCTURAL ENGINEERS ASSOCIATION OF ARIZONA
EXCELLENCE IN STRUCTURAL ENGINEERING**

2021 Award Winners

✦ Excellence in Structural Engineering

- ◆ Banner Univ.Med.Ctr Hospital Tower
Martin, White & Griffis
- ◆ Mirabella @ ASU
PK Associates, LLC

✦ Merit Award in Structural Engineering

- ◆ PimaCC Transportation Center
DLR Group
- ◆ Creighton Univ. Health Services Campus
PK Associates, LLC
- ◆ Suns Verizon 5G Performance Center
PK Associates, LLC
- ◆ Asante Park Library
Pangolin Structural LLC
- ◆ Supima Agave Center
Pangolin Structural LLC
- ◆ Airport I-10 Restoration
PK Associates, LLC
- ◆ Valleywise Health Central Plant
Martin, White & Griffis

2020 Award Winners

✦ Excellence in Structural Engineering

- ◆ UA Health Sciences Innovation Bldg
Martin White & Griffis
- ◆ Block 23 @ CityScape
PK Associates, LLC
- ◆ The Watermark Tempe
PK Associates, LLC
- ◆ Adaptive Reuse at 225 W. Madison
The DLR Group
- ◆ NAU Kitt Recital Hall
Meyer Borgman Johnson
- ◆ UA Skaggs Bldg Addition/Renovations
Martin White & Griffis

✦ Merit Award in Structural Engineer'g

- ◆ American Express - New Canyon Bldg
Meyer Borgman Johnson
- ◆ Desert Diamond West Valley Casino
PK Associates, LLC
- ◆ CHASSE Headquarters
Wright Engineers



STRUCTURAL ENGINEERS ASSOCIATION OF ARIZONA
EXCELLENCE IN STRUCTURAL ENGINEERING

2019

Award Winners

Excellence in Structural Engineering

- ◆ UA Bioscience Research Laboratories Building
Martin, White, & Griffis
- ◆ Bighorn Golf Clubhouse
PK Associates, LLC

Merit Award in Structural Engineering

- ◆ Cruzen-Murray Library, College of Idaho
Pangolin Structural LLC
- ◆ The Clayton House
Wright Engineers

2018

Award Winners

Excellence in Structural Engineering

- ◆ Interdisciplidical Sciences Partnership Building
Martin, White, & Griffis
- ◆ Canyon View HS, Agua Fria USD
DLR Group

Merit Award in Structural Engineer'g

- ◆ Tucson Air Traffic Control Tower
Buehler & Buehler
- ◆ Pima Air & Space Museum Canopy
Schneider Structural Engineers
- ◆ Sayward North Hatchery Building
Structural Engineers Company



STRUCTURAL ENGINEERS ASSOCIATION OF ARIZONA
EXCELLENCE IN STRUCTURAL ENGINEERING

2017 Award Winners

✦ Excellence in Structural Engineering

- ◆ OdySea Aquarium, Scottsdale, AZ
Caruso Turley Scott
- ◆ Sky Harbor Terminal 3 Modernization
Gannett Fleming, Inc.

✦ Merit Award in Structural Engineering

- ◆ SRP Admin. Building Betterment
Buehler & Buehler
- ◆ Alaska Library & Archives Museum
Schneider Structural Engineers
- ◆ Wings Over Water, Houston, Texas
Schneider Structural Engineers
- ◆ The Airmen Memorial Bridge
Structural Concepts, Inc.
- ◆ The Mullin's Landfill Bridge
Structural Concepts, Inc.

2016 Award Winners

✦ Excellence in Structural Engineering

- ◆ Block 12, AZ State University,
PK Associates, LLC
- ◆ Daniel K. Inouye Solar Telescope
M3 Engr'g & Technology
- ◆ Headframe #1 Modifications
Hanlon Engineer'g & Architecture

✦ Merit Award in Structural Engineer'g

- ◆ Sonoran Passage Art Sculptures
M3 Engr'g & Technology
- ◆ The Rey, 28-Story Apartment Bldg
PK Associates
- ◆ Repair of ASR-Contaminated Piles
QuakeWrap, Inc.
- ◆ Hamstra Heating & Cooling HQ
Structural Concepts, Inc.
- ◆ Gov't of Bangladesh - Flour Mill
Structural Engineers Company
- ◆ Kino Parkway Overpass, 22nd St.
Structural Grace, Inc.



STRUCTURAL ENGINEERS ASSOCIATION OF ARIZONA
EXCELLENCE IN STRUCTURAL ENGINEERING

2016

Award Winners

Excellence in Structural Engineering Merit Award in Structural Engineering

- ◆ Block 12, AZ State University,
PK Associates, LLC
- ◆ Daniel K. Inouye Solar Telescope
M3 Engr'g & Technology
- ◆ Headframe #1 Modifications
Hanlon Engineer'g & Architecture

- ◆ Sonoran Passage Art Sculptures
M3 Engr'g & Technology
- ◆ The Rey, 28-Story Apartment Bldg
PK Associates
- ◆ Repair of ASR-Contaminated Piles
QuakeWrap, Inc.
- ◆ Hamstra Heating & Cooling HQ
Structural Concepts, Inc.
- ◆ Gov't of Bangladesh - Flour Mill
Structural Engineers Company
- ◆ Kino Parkway Overpass, 22nd St.
Structural Grace, Inc.



STRUCTURAL ENGINEERS ASSOCIATION OF ARIZONA
EXCELLENCE IN STRUCTURAL ENGINEERING

2015 Award Winners

Excellence in Structural Engineering

- ◆ Fine Ore Storage Building, Cananea,
M3 Engr'g & Technology
- ◆ Primary Sedimentation Basin, Budd Inlet
HDR Engineering, Inc

Merit Award in Structural Engineering

- ◆ Strengthening of Communication Towers
QuakeWrap, Inc.

2014 Award Winners

Excellence in Structural Engineering

- ◆ McCord Hall, AZ State University,
Meyer Borgman Johnson

Merit Award in Structural Engineering

- ◆ Dome Ventilation at CFH Telescope,
M3 Engr'g & Technology
- ◆ Terminal 5 Seismic Upgrade, LAX,
Buehler & Buehler
- ◆ Parasol Building,
Schneider Structural Engineers
- ◆ PCWIN-PECOC Building,
Schneider Structural Engineers



**STRUCTURAL ENGINEERS ASSOCIATION OF ARIZONA
EXCELLENCE IN STRUCTURAL ENGINEERING**

2013

Award Winners

✦ **Excellence in Structural Engineering**

- ✦ Landscape Evolution Laboratory
Biosphere 2, Oracle, AZ
M3 Engineering & Technology

2012

Award Winners

✦ **Excellence in Structural Engineering**

- ✦ Interdisciplinary Science & Technology Bldg IV, Arizona State University
Paragon Structural Design

✦ **Merit Award in Structural Engineer'g**

- ✦ Unisource Energy Office Tower
Grenier Engineering, Inc.
- ✦ The Green Wall
M3 Engineering & Technology



**STRUCTURAL ENGINEERS ASSOCIATION OF ARIZONA
EXCELLENCE IN STRUCTURAL ENGINEERING**

2011

Award Winners

✦ **Excellence in Structural Engineering**

- ◆ Hoover Dam Bypass
Mike O'Callaghan-Pat Tillman
Memorial Bridge,
HDR / T.Y. Lin International

✦ **Merit Award in Structural Engineer'g**

- ◆ Drop – Prewett Family Park
M3 Engineering & Technology
- ◆ CityScape
PK Associates LLC
- ◆ Casino del Sol
PK Associates LLC
- ◆ Paolo Soleri Bridge
PK Associates LLC

2010

Award Winners

✦ **Excellence in Structural Engineering**

- ◆ Gogte Residence, Wall Remediation
Gervasio & Associates, Inc.
- ◆ Student Recreation Center
Expansion, UA
M3 Engineering & Technology

✦ **Merit Award in Structural Engineer'g**

- ◆ Musical Instrument Museum
Meyer, Borgman, & Johnson
- ◆ Blast Strengthening, US Army Bldg
QuakeWrap
- ◆ Jones Residence Trellis,
Janelle Perry, LLC
- ◆ Support Facilities, Dysart Schools,
Beauchamp Engineering, Inc.



**STRUCTURAL ENGINEERS ASSOCIATION OF ARIZONA
EXCELLENCE IN STRUCTURAL ENGINEERING**

2009

Award Winners

✦ **Excellence in Structural Engineering**

- ◆ Dial / Henkel U.S. Headquarters,
Paragon Structural Design, Inc.

✦ **Merit Award in Structural Engineer'g**

- ◆ Steward WAVE Public Art Project,
M3 Engr'g & Technology
- ◆ St. Katherine Greek Orthodox
Church, Structural Engineers Co.
- ◆ Red Wing Bandshell, MBJ
- ◆ Jain Temple, Arun Inc.
- ◆ ASU Polytechnic Academic
Complex, Paragon Structural Design
- ◆ Glendale Park & Ride, Paragon
Structural Design

2008

Award Winners

✦ **Excellence in Structural Engineering**

- ◆ City of Phoenix, Downtown Civic
Space Public Art Project, M3
Engineering & Technology Corp.

✦ **Merit Award in Structural Engineer'g**

- ◆ Performing Arts Center, Valley Vista
High School, Beauchamp
Engineering, Inc.



**STRUCTURAL ENGINEERS ASSOCIATION OF ARIZONA
EXCELLENCE IN STRUCTURAL ENGINEERING**

2007

Award Winners

Excellence in Structural Engineering

- ◆ NAU Applied Research & Development Bldg.
Schneider & Associates
- ◆ Asarco Hayden Smelter
Structural Concepts, Inc.
- ◆ Alvernon Bridge
Structural Concepts Inc.

Merit Award in Structural Engineer'g

- ◆ Steward Observatory GMT Test Tower
M3 Engineer'g & Technology
- ◆ Euclid/Park Bike-Ped Overpass
Holben, Martin, & White

2006

Award Winners

Excellence in Structural Engineering

- ◆ Fox Theatre -
Grenier Engineering, Inc. &
QuakeWrap, Inc.
- ◆ Discovery Channel Telescope Enclosure –
M3 Engineer'g & Technology



STRUCTURAL ENGINEERS ASSOCIATION OF ARIZONA
EXCELLENCE IN STRUCTURAL ENGINEERING

2005

Award Winners

Excellence in Structural Engineering

- ◆ Dysart High School Remodel -
Beauchamp Engineering, Inc.

Merit Award in Structural Engineer'g

- ◆ Paper Airplane Project -
M3 Engineering & Technology
- ◆ VERITAS Optical Support
Structure -
M3 Engineering & Technology

2004

Award Winners

Excellence in Structural Engineering

- ◆ Mesa Arts Center –
Paragon Structural Design
- ◆ St. Thomas Aquinas, Church &
School -
A.V. Schwan & Assoc.
- ◆ Roundhouse Gymnasium –
Quake Wrap

Honorable Mention

- ◆ Verrado Way Bridge -
Structural Grace



STRUCTURAL ENGINEERS ASSOCIATION OF ARIZONA
EXCELLENCE IN STRUCTURAL ENGINEERING