

STRUCTURAL ENGINEERS ASSOCIATION OF ARIZONA

2021

18th Annual

EXCELLENCE IN STRUCTURAL ENGINEERING AWARDS



**STRUCTURAL ENGINEERS ASSOCIATION OF ARIZONA
EXCELLENCE IN STRUCTURAL ENGINEERING**

STRUCTURAL ENGINEERS ASSOCIATION OF ARIZONA

Brent Woods (Judge 2007 thru 2021):

“I am always proud of our profession when I see the excellent work that we all do.”



**STRUCTURAL ENGINEERS ASSOCIATION OF ARIZONA
EXCELLENCE IN STRUCTURAL ENGINEERING**

STRUCTURAL ENGINEERS ASSOCIATION OF ARIZONA

Awards History (2004 thru 2021)

- ✦ **Years = 18**
- ✦ **Entries = 115**
- ✦ **Awards = 89**
 - ★ **Structural Excellence = 35**
 - ★ **Merit Awards = 54**

*All AWARD WINNERS (2021 thru 2004)
are listed at the end of this presentation.*



**STRUCTURAL ENGINEERS ASSOCIATION OF ARIZONA
EXCELLENCE IN STRUCTURAL ENGINEERING**

STRUCTURAL ENGINEERS ASSOCIATION OF ARIZONA

2021 EXCELLENCE IN STRUCTURAL ENGINEERING AWARDS



STRUCTURAL ENGINEERS ASSOCIATION OF ARIZONA
EXCELLENCE IN STRUCTURAL ENGINEERING

**E
X
C
E
L
L
E
N
C
E**

2021



STRUCTURAL ENGINEERS ASSOCIATION OF ARIZONA

2021

Excellence in Structural Engineering Award

New Buildings, Over \$10 Million Dollars

**Banner University Medical Center
Hospital Tower
Tucson, AZ**

presented to

Martin, White & Griffis Structural Engineers, Inc.



**STRUCTURAL ENGINEERS ASSOCIATION OF ARIZONA
EXCELLENCE IN STRUCTURAL ENGINEERING**

**E
X
C
E
L
L
E
N
C
E**

2021



**STRUCTURAL ENGINEERS ASSOCIATION OF ARIZONA
EXCELLENCE IN STRUCTURAL ENGINEERING**

**E
X
C
E
L
L
E
N
C
E**

Project Summary

When Banner Health purchased the 1970's era University of Arizona Medical Center in 2015, the campus was in disrepair and the community distrustful of the care. A revitalization plan included a new nine-story 670,000-square-foot clinical tower adjoining the existing facility. By devising a flexible structural system that capitalized on processes and integrated project delivery (IPD)-related timing, the new Banner University Medical Center Hospital Tower accommodates future growth, overcame incredible site challenges and remained within the \$350M budget despite steep escalation, ultimately facilitating the Center's shift to a world-class academic medical teaching facility.

2021



**STRUCTURAL ENGINEERS ASSOCIATION OF ARIZONA
EXCELLENCE IN STRUCTURAL ENGINEERING**

**E
X
C
E
L
L
E
N
C
E**

2021



**STRUCTURAL ENGINEERS ASSOCIATION OF ARIZONA
EXCELLENCE IN STRUCTURAL ENGINEERING**



**E
X
C
E
L
L
E
N
C
E**

2021



STRUCTURAL ENGINEERS ASSOCIATION OF ARIZONA

2021

Excellence in Structural Engineering Award

New Buildings, Over \$10 Million Dollars

**Mirabella
Arizona State University
Tempe, AZ**

presented to

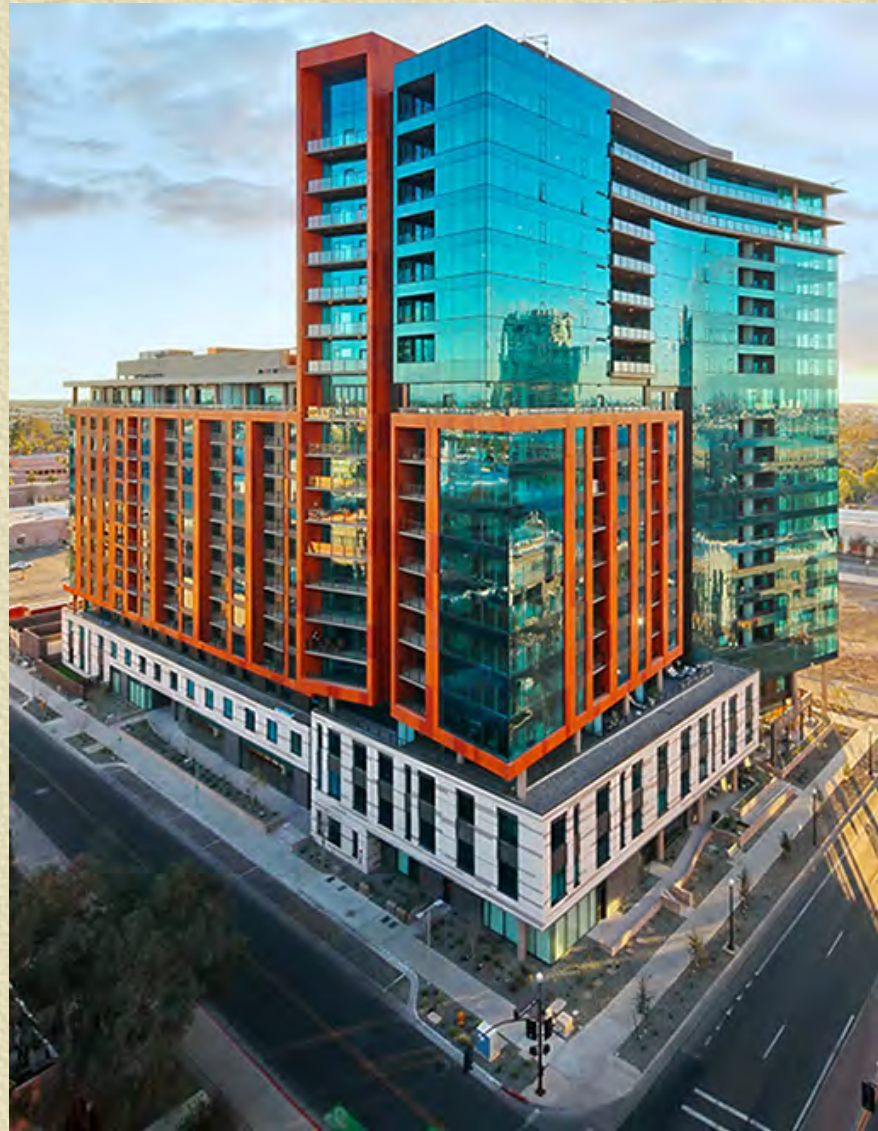
PK Associates, LLC



**STRUCTURAL ENGINEERS ASSOCIATION OF ARIZONA
EXCELLENCE IN STRUCTURAL ENGINEERING**

**E
X
C
E
L
L
E
N
C
E**

2021



**STRUCTURAL ENGINEERS ASSOCIATION OF ARIZONA
EXCELLENCE IN STRUCTURAL ENGINEERING**



**E
X
C
E
L
L
E
N
C
E**

2021

Project Summary

Mirabella brings a unique retirement experience to Arizona State University. It's located in the heart of an urban oasis, providing numerous social, educational, and recreational activities to the residents.

The project features a 454,205 square foot L-shaped senior living building, with 20-story and 13-story wings, over two levels of below grade parking. The facility provides 252 independent living units and 52 assisted living/skilled nursing/memory care units.



**STRUCTURAL ENGINEERS ASSOCIATION OF ARIZONA
EXCELLENCE IN STRUCTURAL ENGINEERING**

EXCELLENCE

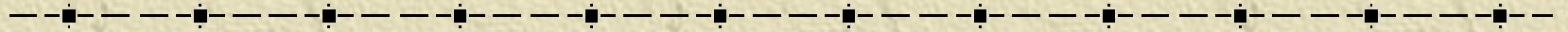
2021



STRUCTURAL ENGINEERS ASSOCIATION OF ARIZONA
EXCELLENCE IN STRUCTURAL ENGINEERING



2021 Excellence in Structural Engineering Award Winners



PROJECT	FIRM	CATEGORY
Banner University Medical Center Hospital Tower	Martin, White & Griffis	New Buildings, Over \$10M
Mirabella at ASU	PK Associates, LLC	New Buildings, Over \$10M



**STRUCTURAL ENGINEERS ASSOCIATION OF ARIZONA
EXCELLENCE IN STRUCTURAL ENGINEERING**

STRUCTURAL ENGINEERS ASSOCIATION OF ARIZONA

2021 MERIT AWARDS IN STRUCTURAL ENGINEERING



STRUCTURAL ENGINEERS ASSOCIATION OF ARIZONA
EXCELLENCE IN STRUCTURAL ENGINEERING

**M
E
R
I
T**

2021



STRUCTURAL ENGINEERS ASSOCIATION OF ARIZONA

2021

Merit Award in Structural Engineering

New Buildings, Over \$10 Million Dollars

**Pima Community College
Transportation Center
Tucson, AZ**

presented to

DLR Group



**STRUCTURAL ENGINEERS ASSOCIATION OF ARIZONA
EXCELLENCE IN STRUCTURAL ENGINEERING**

**M
E
R
I
T**

2021



**STRUCTURAL ENGINEERS ASSOCIATION OF ARIZONA
EXCELLENCE IN STRUCTURAL ENGINEERING**

M
E
R
I
T

2021

Project Summary

The Transportation Center at Pima Community College's Center of Excellence for Applied Technology is 43,000 SF with a total of 27 work bays, including 10 EV-ready, 3 heavy transportation, 3 OEM labs, and spaces for testing and diagnosis of electrical vehicles, faculty offices, classrooms, a dynamometer room, equipment storage, and a large public entry. The structural design focuses on responding to flexibility and visibility, resulting in a state-of-the-art, hands-on learning environment reflected in the vast amount of exposed steel. This involved using a high degree of coordination and unique framing concepts, which the team termed as "structural gymnastics."



**STRUCTURAL ENGINEERS ASSOCIATION OF ARIZONA
EXCELLENCE IN STRUCTURAL ENGINEERING**

M
E
R
I
T

2021



**STRUCTURAL ENGINEERS ASSOCIATION OF ARIZONA
EXCELLENCE IN STRUCTURAL ENGINEERING**

**M
E
R
I
T**

2021



STRUCTURAL ENGINEERS ASSOCIATION OF ARIZONA

2021

Merit Award in Structural Engineering

New Buildings, Over \$10 Million Dollars

**Creighton University
Health Services Campus
Tempe, AZ**

presented to

PK Associates, LLC



**STRUCTURAL ENGINEERS ASSOCIATION OF ARIZONA
EXCELLENCE IN STRUCTURAL ENGINEERING**

M
E
R
I
T

2021



**STRUCTURAL ENGINEERS ASSOCIATION OF ARIZONA
EXCELLENCE IN STRUCTURAL ENGINEERING**

M
E
R
I
T

2021

Project Summary

Omaha, Nebraska-based Creighton University has expanded its Phoenix medical school campus on the revitalized Park Central Mall property. The project consists of a 7-story, 183,000 SF health sciences building with classrooms, a 6,000 SF CEC (Community Education Center), and a 30-seat non-denominational chapel. The campus will be home to a full, four-year medical school, a nursing program as well as pharmacy, occupational therapy, physical therapy, and physician assistant programs. The construction type is post-tension slabs with cast-in-place concrete walls and columns.



**STRUCTURAL ENGINEERS ASSOCIATION OF ARIZONA
EXCELLENCE IN STRUCTURAL ENGINEERING**

M
E
R
I
T

2021



**STRUCTURAL ENGINEERS ASSOCIATION OF ARIZONA
EXCELLENCE IN STRUCTURAL ENGINEERING**



**M
E
R
I
T**

2021



STRUCTURAL ENGINEERS ASSOCIATION OF ARIZONA

2021

Merit Award in Structural Engineering

New Buildings, Over \$10 Million Dollars

**Phoenix Suns Verizon 5G Performance Center
Phoenix, AZ**

presented to

PK Associates, LLC



**STRUCTURAL ENGINEERS ASSOCIATION OF ARIZONA
EXCELLENCE IN STRUCTURAL ENGINEERING**

M
E
R
I
T

2021



**STRUCTURAL ENGINEERS ASSOCIATION OF ARIZONA
EXCELLENCE IN STRUCTURAL ENGINEERING**



M
E
R
I
T

2021

Project Summary

The Phoenix Suns Verizon 5G Performance Center is a one-of-a-kind training facility. From inception to completion, the 55,812 square foot facility was delivered in only 18 months. At the heart of this state-of-the-art facility are two basketball courts with dedicated training space for both the Phoenix Suns and Phoenix Mercury. The facility is infused with technology which provides real-time information on player's movement, mechanics and progress. The facility also provides generous gathering areas for the teams to relax and recover.



**STRUCTURAL ENGINEERS ASSOCIATION OF ARIZONA
EXCELLENCE IN STRUCTURAL ENGINEERING**

M
E
R
I
T

2021



**STRUCTURAL ENGINEERS ASSOCIATION OF ARIZONA
EXCELLENCE IN STRUCTURAL ENGINEERING**

M
E
R
I
T

2021



STRUCTURAL ENGINEERS ASSOCIATION OF ARIZONA

2021

Merit Award in Structural Engineering

New Buildings, \$2 Million to \$10 Million Dollars

**Asante Park Library
Surprise, AZ**

presented to

Pangolin Structural LLC



**STRUCTURAL ENGINEERS ASSOCIATION OF ARIZONA
EXCELLENCE IN STRUCTURAL ENGINEERING**

M
E
R
I
T

2021



**STRUCTURAL ENGINEERS ASSOCIATION OF ARIZONA
EXCELLENCE IN STRUCTURAL ENGINEERING**

M
E
R
I
T

2021

Project Summary

Asante Library is a 10,000 SF, \$4.5M design-build library project operated by the Maricopa Library District and owned by the City of Surprise. The building is constructed on a built-up building pad with perimeter concrete retaining walls to accommodate a drainage basin in the park. Elegant, cantilevered shade canopies surrounding the perimeter reduce direct sunlight on the building's glass exterior. The structure consists of a steel beam roof to steel columns, masonry bearing walls and spread footings on a built-up building pad to accommodate a drainage basin.



**STRUCTURAL ENGINEERS ASSOCIATION OF ARIZONA
EXCELLENCE IN STRUCTURAL ENGINEERING**

M
E
R
I
T



2021



**STRUCTURAL ENGINEERS ASSOCIATION OF ARIZONA
EXCELLENCE IN STRUCTURAL ENGINEERING**



**M
E
R
I
T**

2021



STRUCTURAL ENGINEERS ASSOCIATION OF ARIZONA

2021

Merit Award in Structural Engineering

New Buildings, \$2 Million to \$10 Million Dollars

**Supima Agave Center
Tempe, AZ**

presented to

Pangolin Structural LLC



**STRUCTURAL ENGINEERS ASSOCIATION OF ARIZONA
EXCELLENCE IN STRUCTURAL ENGINEERING**

M
E
R
I
T

2021



**STRUCTURAL ENGINEERS ASSOCIATION OF ARIZONA
EXCELLENCE IN STRUCTURAL ENGINEERING**



M
E
R
I
T

2021

Project Summary

Supima Agave Center in Tempe, AZ, is headquarters to one of the premier cotton promoters in the US. The structure is comprised of two, 23,000SF two-story exposed masonry buildings. The buildings have multiple masonry wing walls with staggered blocks to give the interior uninterrupted natural light. These masonry walls are designed with vertical reinforcing free-spanning to roof bond beams. The elevated floor and roof are framed with steel beams free spanning the entire 41'-0" interior space with beams cantilevering off the two interior masonry walls with a tapered end to create a shared, exposed steel catwalk and courtyard area between structures.



**STRUCTURAL ENGINEERS ASSOCIATION OF ARIZONA
EXCELLENCE IN STRUCTURAL ENGINEERING**

M
E
R
I
T

2021



**STRUCTURAL ENGINEERS ASSOCIATION OF ARIZONA
EXCELLENCE IN STRUCTURAL ENGINEERING**



M
E
R
I
T

2021



STRUCTURAL ENGINEERS ASSOCIATION OF ARIZONA

2021

Merit Award in Structural Engineering

Forensic/Renovation/Retrofit/Rehabilitation

**Valleywise Health Central Plant
Phoenix, AZ**

presented to

Martin, White & Griffis Structural Engineers, Inc.



**STRUCTURAL ENGINEERS ASSOCIATION OF ARIZONA
EXCELLENCE IN STRUCTURAL ENGINEERING**

M
E
R
I
T

2021



**STRUCTURAL ENGINEERS ASSOCIATION OF ARIZONA
EXCELLENCE IN STRUCTURAL ENGINEERING**



M
E
R
I
T

2021

Project Summary

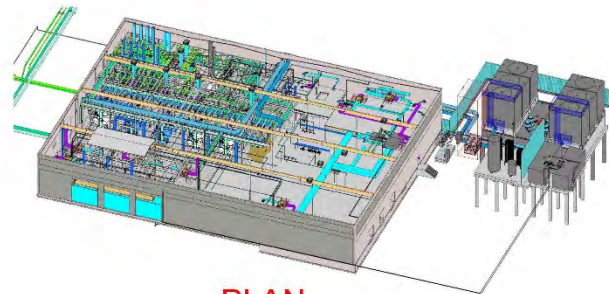
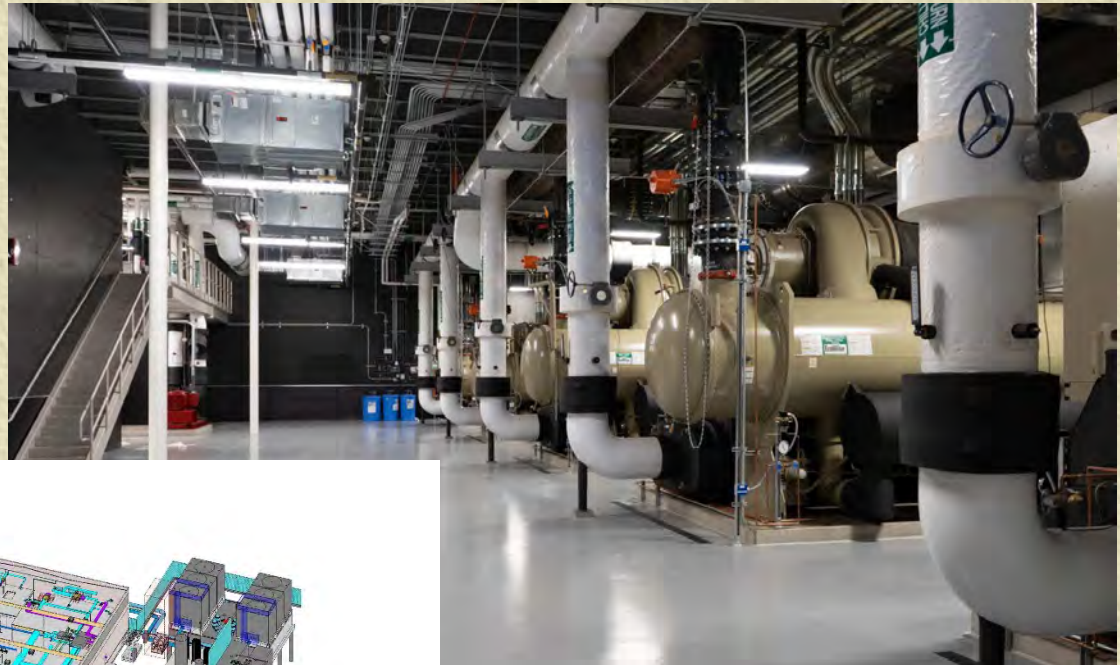
Central utility plant (CUP) projects are typically straightforward affairs, but the new CUP at Valleywise Health's Phoenix campus was anything but. Built in one third of its previous space within an existing warehouse structure in the middle of campus, the CUP successfully brought services online and fed the new utility grid serving the medical campus, all while delivery of materials and supplies from the warehouse to the hospital were still ongoing. Central to the success was the design of a 20,000 square foot steel structure with openings and still functional administrative/warehouse space fully integrated within the existing tilt-up warehouse.



**STRUCTURAL ENGINEERS ASSOCIATION OF ARIZONA
EXCELLENCE IN STRUCTURAL ENGINEERING**

M
E
R
I
T

2021



PLAN



SECTION

**STRUCTURAL ENGINEERS ASSOCIATION OF ARIZONA
EXCELLENCE IN STRUCTURAL ENGINEERING**



**M
E
R
I
T**

2021



STRUCTURAL ENGINEERS ASSOCIATION OF ARIZONA

2021

Merit Award in Structural Engineering

Forensic/Renovation/Retrofit/Rehabilitation

**Airport I-10 Restoration
(Building Foundation Stabilization & Restoration)
Phoenix, AZ**

presented to

PK Associates, LLC

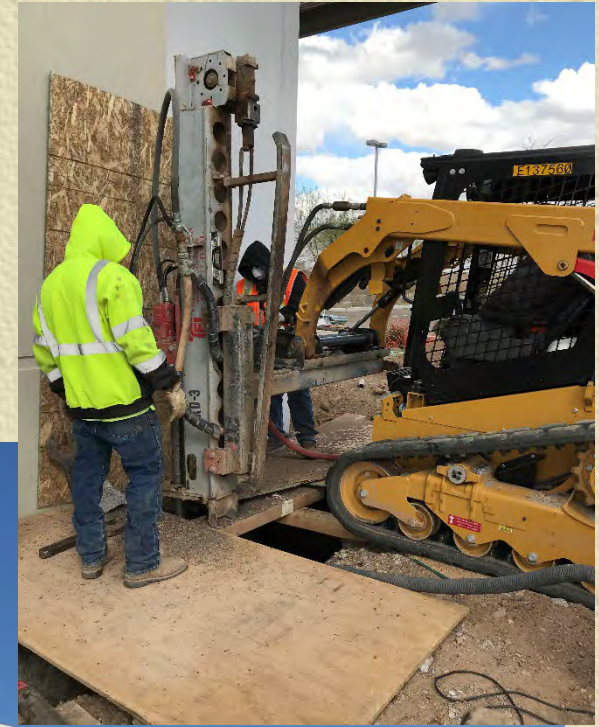


**STRUCTURAL ENGINEERS ASSOCIATION OF ARIZONA
EXCELLENCE IN STRUCTURAL ENGINEERING**

Airport I-10 Restoration (Foundation Stabilization & Restore) PK Associates

M
E
R
I
T

2021



**STRUCTURAL ENGINEERS ASSOCIATION OF ARIZONA
EXCELLENCE IN STRUCTURAL ENGINEERING**



**M
E
R
I
T**

2021

Project Summary

In October Arizona Foundation Solutions, PK & Associates, Wespac, Hoque & Associates, and Pangolin Structural were contacted by Wentworth Properties to stabilize and raise a 279,000 sf tilt up building that settled up to 15 inches in some locations. Panels had separated, structural components were compromised and the building was continuing to settle at over ½" per month due to little understood subsurface geologic forces.

Emergency shoring and underpinning were directed by the engineers to stop the immediate threat of collapse, followed by a more comprehensive design of deep piles and compaction grouting that penetrated buried concrete debris.



**STRUCTURAL ENGINEERS ASSOCIATION OF ARIZONA
EXCELLENCE IN STRUCTURAL ENGINEERING**

**M
E
R
I
T**

2021



**STRUCTURAL ENGINEERS ASSOCIATION OF ARIZONA
EXCELLENCE IN STRUCTURAL ENGINEERING**



2021 Merit Awards in Structural Engineering

PROJECT	FIRM	CATEGORY
Pima Community College Transportation Center	DLR Group	New Buildings, Over \$10M
Creighton University Health Services Campus	PK Associates, LLC	New Buildings, Over \$10M
Phoenix Suns Verizon 5G Performance Center	PK Associates, LLC	New Buildings, Over \$10M
Asante Park Library	Pangolin Structural LLC	New Buildings, \$2M -\$10M
Supima Agave Center	Pangolin Structural LLC	New Buildings, \$2M -\$10M
Valleywise Central Health Plant	Martin, White & Griffis Structural Engineers, Inc.	Forensic/Renovation/ Retrofit/Rehabilitation
Airport I-10 Restoration (<i>Building Foundation Stabilization & Restoration</i>)	PK Associates, LLC	Forensic/Renovation/ Retrofit/Rehabilitation



STRUCTURAL ENGINEERS ASSOCIATION OF ARIZONA
EXCELLENCE IN STRUCTURAL ENGINEERING

2021

Award Winners

✦ Excellence in Structural Engineering

- ✦ Banner Univ.Med.Ctr Hospital Tower
Martin, White & Griffis
- ✦ Mirabella @ ASU
PK Associates, LLC

✦ Merit Award in Structural Engineering

- ✦ PimaCC Transportation Center
DLR Group
- ✦ Creighton Univ. Health Services Campus
PK Associates, LLC
- ✦ Suns Verizon 5G Performance Center
PK Associates, LLC
- ✦ Asante Park Library
Pangolin Structural LLC
- ✦ Supima Agave Center
Pangolin Structural LLC
- ✦ Airport I-10 Restoration
PK Associates, LLC
- ✦ Valleywise Health Central Plant
Martin, White & Griffis



STRUCTURAL ENGINEERS ASSOCIATION OF ARIZONA
EXCELLENCE IN STRUCTURAL ENGINEERING

Judges, 2021

2004 thru 2021 (18 years)

✦ Sal Caccavale, Retired/ Committee Chair (Tucson)

2007 thru 2021 (15 years)

✦ Brent Woods, Woods Structural (Tucson)

2009 thru 2016, 2018 thru 2021 (12 years)

✦ Paul Scott, Caruso Turley Scott, Inc. (Central)

2015 thru 2021 (7 years)

✦ Janelle Perry, JP Structural (Tucson)

2017 thru 2021 (5 years)

✦ Greg Bakkum, Bakkum Noelke (Central)

2021 (1st year)

✦ Andrew Netupsky, Structural Engineers Co. (Central)

✦ Allan Ortega, M3 Engineering (Tucson)



STRUCTURAL ENGINEERS ASSOCIATION OF ARIZONA
EXCELLENCE IN STRUCTURAL ENGINEERING

Previous Judges

- ✦ Mo Glancy, Retired - City of Phoenix (Central)
2004 thru 2020 (17 years)
- ✦ Bruce Barrera, Retired - CBH Consulting Engrs (Central)
2004 thru 2018 (15 years)
- ✦ George Stevenson, Structural Concepts (Tucson)
2009 thru 2014, 2019 (7 years)
- ✦ Dan Lundwall, Retired - Structural Concepts (Tucson)
2006, 2008 (2 years)
- ✦ Steven Hess, Hess Structural Engineering (Tucson)
2006 (1 year)
- ✦ Bill Sheely, OWP (Architect, Phoenix)
2004, 2005, 2006 (3 years)
- ✦ Mo Modi, Modi & Company (Tucson)
2004, 2005 (2 years)
- ✦ Henry Tom, Line & Space (Architect, Tucson)
2004, 2005 (2 years)



**STRUCTURAL ENGINEERS ASSOCIATION OF ARIZONA
EXCELLENCE IN STRUCTURAL ENGINEERING**

SEAOA Awards Committee

WILL YOU HELP?

- ◆ In need of a Co-Chair (Full Member)
- ◆ Future Judges (Full Members)
- ◆ Contact Sal Caccavale: seccbc@cox.net



STRUCTURAL ENGINEERS ASSOCIATION OF ARIZONA
EXCELLENCE IN STRUCTURAL ENGINEERING

2022 Award Winners

Excellence in Structural Engineering Award

◆ **WILL THIS BE YOU?**

**Mark Your Calendars for
March 2022 Announcement !**



**STRUCTURAL ENGINEERS ASSOCIATION OF ARIZONA
EXCELLENCE IN STRUCTURAL ENGINEERING**

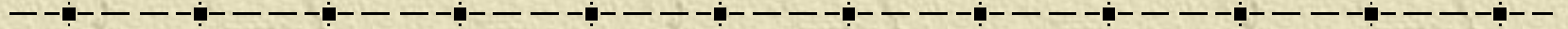
Closing Notes

- ◆ **This presentation will be available for viewing on the SEAoA website.**
- ◆ **Award winning projects will be featured in the upcoming 2021-2022 SEAoA quarterly newsletters.**



**STRUCTURAL ENGINEERS ASSOCIATION OF ARIZONA
EXCELLENCE IN STRUCTURAL ENGINEERING**

STRUCTURAL ENGINEERS ASSOCIATION OF ARIZONA



EXCELLENCE IN STRUCTURAL ENGINEERING

AWARD WINNERS 2021 thru 2004



**STRUCTURAL ENGINEERS ASSOCIATION OF ARIZONA
EXCELLENCE IN STRUCTURAL ENGINEERING**

2021

Award Winners

✦ Excellence in Structural Engineering

- ✦ Banner Univ.Med.Ctr Hospital Tower
Martin, White & Griffis
- ✦ Mirabella @ ASU
PK Associates, LLC

✦ Merit Award in Structural Engineering

- ✦ PimaCC Transportation Center
DLR Group
- ✦ Creighton Univ. Health Services Campus
PK Associates, LLC
- ✦ Suns Verizon 5G Performance Center
PK Associates, LLC
- ✦ Asante Park Library
Pangolin Structural LLC
- ✦ Supima Agave Center
Pangolin Structural LLC
- ✦ Airport I-10 Restoration
PK Associates, LLC
- ✦ Valleywise Health Central Plant
Martin, White & Griffis



**STRUCTURAL ENGINEERS ASSOCIATION OF ARIZONA
EXCELLENCE IN STRUCTURAL ENGINEERING**

2020

Award Winners

Excellence in Structural Engineering Merit Award in Structural Engineering

- ◆ UA Health Sciences Innovation Bldg

Martin White & Griffis

- ◆ Block 23 @ CityScape

PK Associates, LLC

- ◆ The Watermark Tempe

PK Associates, LLC

- ◆ Adaptive Reuse at 225 W. Madison

The DLR Group

- ◆ NAU Kitt Recital Hall

Meyer Borgman Johnson

- ◆ UA Skaggs Bldg Addition/Renovations

Martin White & Griffis

- ◆ American Express - New Canyon Bldg

Meyer Borgman Johnson

- ◆ Desert Diamond West Valley Casino

PK Associates, LLC

- ◆ CHASSE Headquarters

Wright Engineers



STRUCTURAL ENGINEERS ASSOCIATION OF ARIZONA
EXCELLENCE IN STRUCTURAL ENGINEERING

2019 Award Winners

Excellence in Structural Engineering

- ◆ UA Bioscience Research Laboratories Building
Martin, White, & Griffis
- ◆ Bighorn Golf Clubhouse
PK Associates, LLC

Merit Award in Structural Engineering

- ◆ Cruzen-Murray Library, College of Idaho
Pangolin Structural LLC
- ◆ The Clayton House
Wright Engineers

2018 Award Winners

Excellence in Structural Engineering

- ◆ Interdisciplidical Sciences Partnership Building
Martin, White, & Griffis
- ◆ Canyon View HS, Agua Fria USD
DLR Group

Merit Award in Structural Engineer'g

- ◆ Tucson Air Traffic Control Tower
Buehler & Buehler
- ◆ Pima Air & Space Museum Canopy
Schneider Structural Engineers
- ◆ Sayward North Hatchery Building
Structural Engineers Company



**STRUCTURAL ENGINEERS ASSOCIATION OF ARIZONA
EXCELLENCE IN STRUCTURAL ENGINEERING**

2017

Award Winners

Excellence in Structural Engineering

- ◆ OdySea Aquarium, Scottsdale, AZ
Caruso Turley Scott
- ◆ Sky Harbor Terminal 3 Modernization
Gannett Fleming, Inc.

Merit Award in Structural Engineering

- ◆ SRP Admin. Building Betterment
Buehler & Buehler
- ◆ State of Alaska Library & Archives Museum
Schneider Structural Engineers
- ◆ Wings Over Water, Houston, Texas
Schneider Structural Engineers
- ◆ The Airmen Memorial Bridge
Structural Concepts, Inc.
- ◆ The Mullin's Landfill Bridge
Structural Concepts, Inc.



**STRUCTURAL ENGINEERS ASSOCIATION OF ARIZONA
EXCELLENCE IN STRUCTURAL ENGINEERING**

2016

Award Winners

✦ Excellence in Structural Engineering ✦ Merit Award in Structural Engineering

- ◆ Block 12, AZ State University,
PK Associates, LLC
- ◆ Daniel K. Inouye Solar Telescope
M3 Engr'g & Technology
- ◆ Headframe #1 Modifications
Hanlon Engineer'g & Architecture
- ◆ Sonoran Passage Art Sculptures
M3 Engr'g & Technology
- ◆ The Rey, 28-Story Apartment Bldg
PK Associates
- ◆ Repair of ASR-Contaminated Piles
QuakeWrap, Inc.
- ◆ Hamstra Heating & Cooling HQ
Structural Concepts, Inc.
- ◆ Gov't of Bangladesh - Flour Mill
Structural Engineers Company
- ◆ Kino Parkway Overpass, 22nd St.
Structural Grace, Inc.



**STRUCTURAL ENGINEERS ASSOCIATION OF ARIZONA
EXCELLENCE IN STRUCTURAL ENGINEERING**

2015 Award Winners

-
- ✦ Excellence in Structural Engineering
 - ◆ Fine Ore Storage Building, Cananea,
M3 Engr'g & Technology
 - ◆ Primary Sedimentation Basin, Budd Inlet
HDR Engineering, Inc
 - ✦ Merit Award in Structural Engineering
 - ◆ Strengthening of Communication Towers
QuakeWrap, Inc.

2014 Award Winners

-
- ✦ Excellence in Structural Engineering
 - ◆ McCord Hall, AZ State University,
Meyer Borgman Johnson
 - ✦ Merit Award in Structural Engineering
 - ◆ Dome Ventilation at CFH Telescope,
M3 Engr'g & Technology
 - ◆ Terminal 5 Seismic Upgrade, LAX,
Buehler & Buehler
 - ◆ Parasol Building,
Schneider Structural Engineers
 - ◆ PCWIN-PECOC Building,
Schneider Structural Engineers



**STRUCTURAL ENGINEERS ASSOCIATION OF ARIZONA
EXCELLENCE IN STRUCTURAL ENGINEERING**

2013

Award Winners

✦ **Excellence in Structural Engineering**

- ✦ Landscape Evolution Laboratory
Biosphere 2, Oracle, AZ
M3 Engineering & Technology

2012

Award Winners

✦ **Excellence in Structural Engineering**

- ✦ Interdisciplinary Science & Technology Bldg IV, Arizona State University
Paragon Structural Design

✦ **Merit Award in Structural Engineer'g**

- ✦ Unisource Energy Office Tower
Grenier Engineering, Inc.
- ✦ The Green Wall
M3 Engineering & Technology



**STRUCTURAL ENGINEERS ASSOCIATION OF ARIZONA
EXCELLENCE IN STRUCTURAL ENGINEERING**

2011

Award Winners

Excellence in Structural Engineering

- ◆ Hoover Dam Bypass
Mike O'Callaghan-Pat Tillman
Memorial Bridge,
HDR / T.Y. Lin International

Merit Award in Structural Engineer'g

- ◆ Drop – Prewett Family Park
M3 Engineering & Technology
- ◆ CityScape
PK Associates LLC
- ◆ Casino del Sol
PK Associates LLC
- ◆ Paolo Soleri Bridge
PK Associates LLC

2010

Award Winners

Excellence in Structural Engineering

- ◆ Gogte Residence, Wall Remediation
Gervasio & Associates, Inc.
- ◆ Student Recreation Center
Expansion, UA
M3 Engineering & Technology

Merit Award in Structural Engineer'g

- ◆ Musical Instrument Museum
Meyer, Borgman, & Johnson
- ◆ Blast Strengthening, US Army Bldg
QuakeWrap
- ◆ Jones Residence Trellis,
Janelle Perry, LLC
- ◆ Support Facilities, Dysart Schools,
Beauchamp Engineering, Inc.



STRUCTURAL ENGINEERS ASSOCIATION OF ARIZONA
EXCELLENCE IN STRUCTURAL ENGINEERING

2009

Award Winners

✦ **Excellence in Structural Engineering**

- ◆ Dial / Henkel U.S. Headquarters,
Paragon Structural Design, Inc.

✦ **Merit Award in Structural Engineer'g**

- ◆ Steward WAVE Public Art Project,
M3 Engr'g & Technology
- ◆ St. Katherine Greek Orthodox
Church, Structural Engineers Co.
- ◆ Red Wing Bandshell, MBJ
- ◆ Jain Temple, Arun Inc.
- ◆ ASU Polytechnic Academic
Complex, Paragon Structural Design
- ◆ Glendale Park & Ride, Paragon
Structural Design

2008

Award Winners

✦ **Excellence in Structural Engineering**

- ◆ City of Phoenix, Downtown Civic
Space Public Art Project, M3
Engineering & Technology Corp.

✦ **Merit Award in Structural Engineer'g**

- ◆ Performing Arts Center, Valley Vista
High School, Beauchamp
Engineering, Inc.



**STRUCTURAL ENGINEERS ASSOCIATION OF ARIZONA
EXCELLENCE IN STRUCTURAL ENGINEERING**

2007

Award Winners

✦ **Excellence in Structural Engineering**

- ◆ NAU Applied Research & Development Bldg.
Schneider & Associates
- ◆ Asarco Hayden Smelter
Structural Concepts, Inc.
- ◆ Alvernon Bridge
Structural Concepts Inc.

✦ **Merit Award in Structural Engineer'g**

- ◆ Steward Observatory GMT Test Tower
M3 Engineer'g & Technology
- ◆ Euclid/Park Bike-Ped Overpass
Holben, Martin, & White

2006

Award Winners

✦ **Excellence in Structural Engineering**

- ◆ Fox Theatre -
Grenier Engineerng, Inc. &
QuakeWrap, Inc.
- ◆ Discovery Channel Telescope Enclosure –
M3 Engineer'g & Technology



**STRUCTURAL ENGINEERS ASSOCIATION OF ARIZONA
EXCELLENCE IN STRUCTURAL ENGINEERING**

2005

Award Winners

Excellence in Structural Engineering

- ◆ Dysart High School Remodel -
Beauchamp Engineering, Inc.

Merit Award in Structural Engineer'g

- ◆ Paper Airplane Project -
M3 Engineering & Technology
- ◆ VERITAS Optical Support
Structure -
M3 Engineering & Technology

2004

Award Winners

Excellence in Structural Engineering

- ◆ Mesa Arts Center –
Paragon Structural Design
- ◆ St. Thomas Aquinas, Church &
School -
A.V. Schwan & Assoc.
- ◆ Roundhouse Gymnasium –
Quake Wrap

Honorable Mention

- ◆ Verrado Way Bridge -
Structural Grace



**STRUCTURAL ENGINEERS ASSOCIATION OF ARIZONA
EXCELLENCE IN STRUCTURAL ENGINEERING**